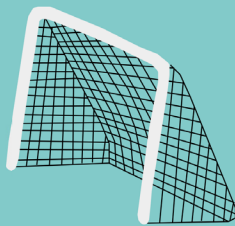
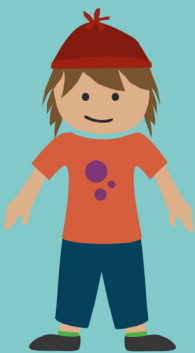


Understanding Support for Children and Young People with Special Educational Needs and Disabilities



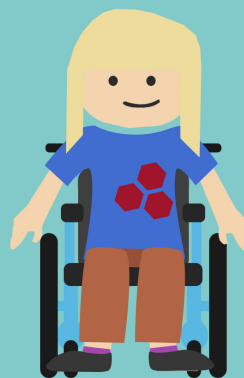
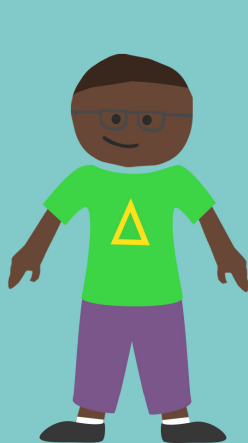


Hello, this is me!



I love football...

...going to the cinema...



...and hanging out with my friends!



I can do lots of things really well, but sometimes I struggle.



Anxious



Worried



Scared



Sad



Angry



Confused

This can bring out lots of different feelings for me.

SEND

Special

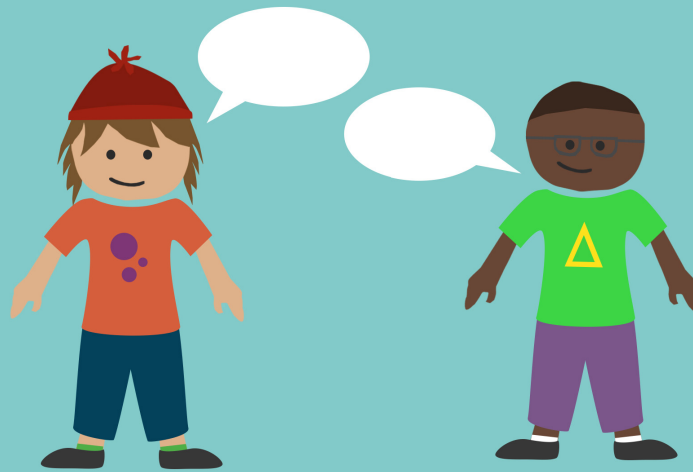
Educational

Need

or

Disability

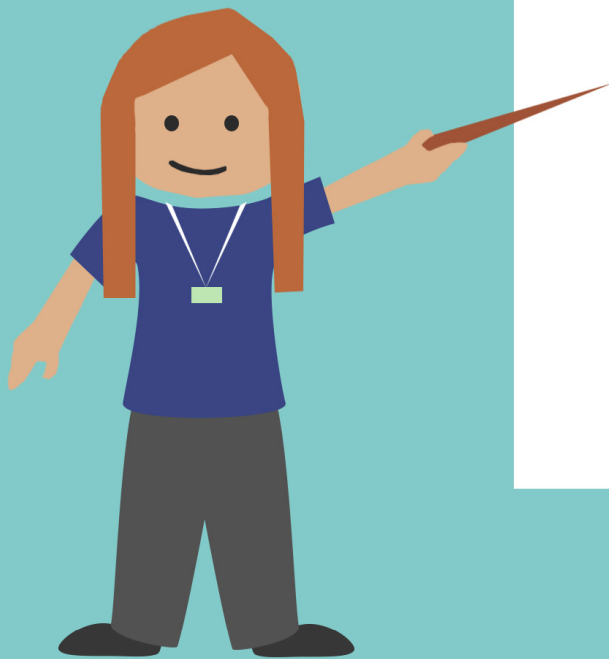
Having a Special Educational Need, or a Disability (SEND), means I might need extra help for certain things.



The best way to know how to support me is to talk to me, and get to know me as a person.



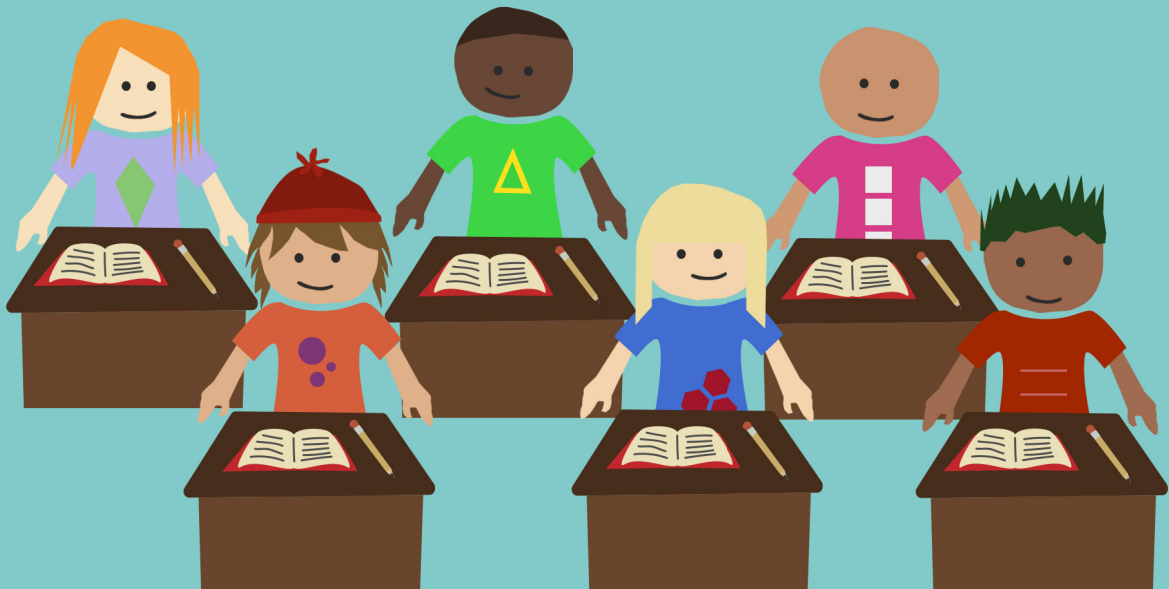
Everybody is different, no-one is the same!
We all need different help.



Quality First Teaching

- Good questioning
- Interactive lessons
- Praise
- Clear learning outcomes
- Group and individual work

In school, I learn best when my teachers use approaches that work for me.



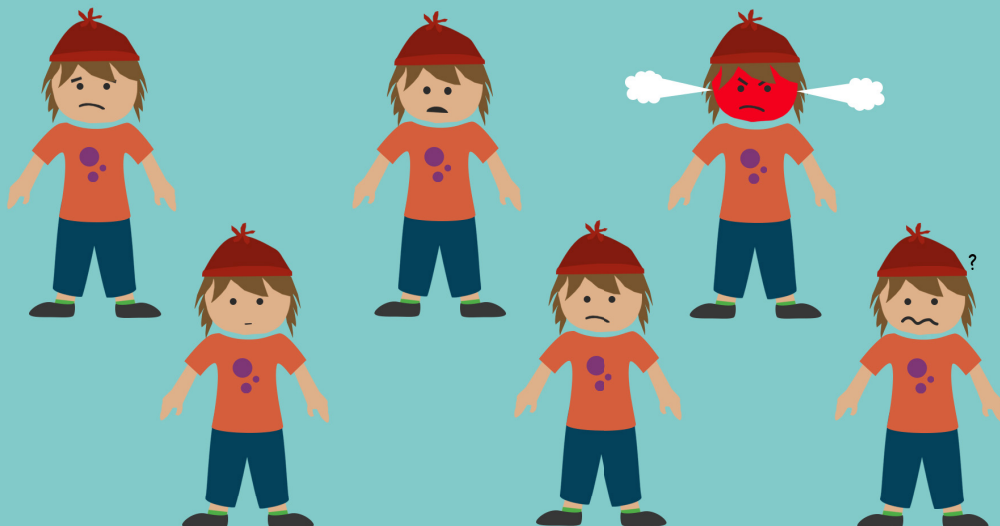
I might learn about a new subject before the rest of my class. This gives me a head-start in my lessons.



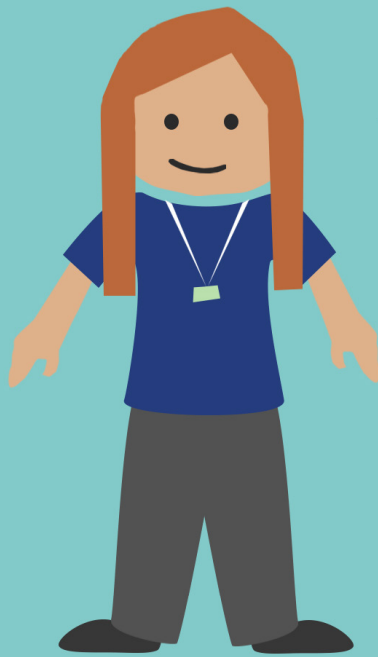
Simple things, like having extra time, a checklist, or visual aids can make a big difference.



Working with my friends can also really help as they understand where I am coming from.

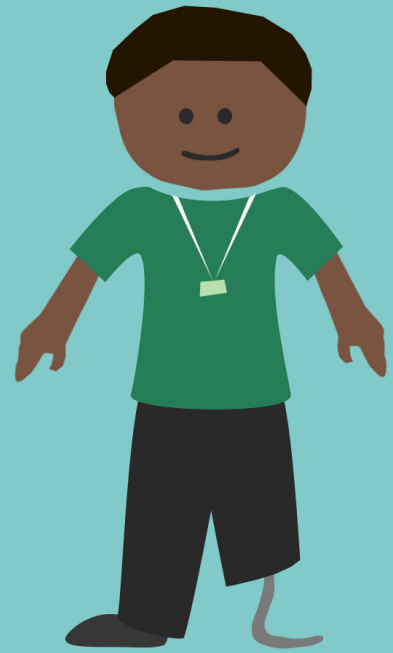


I may need some support with my feelings and worries too.

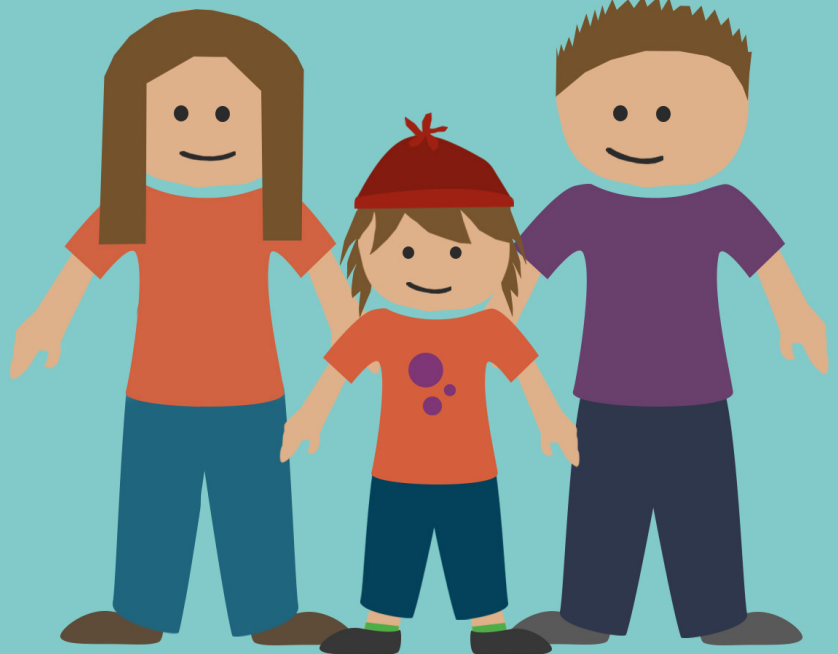
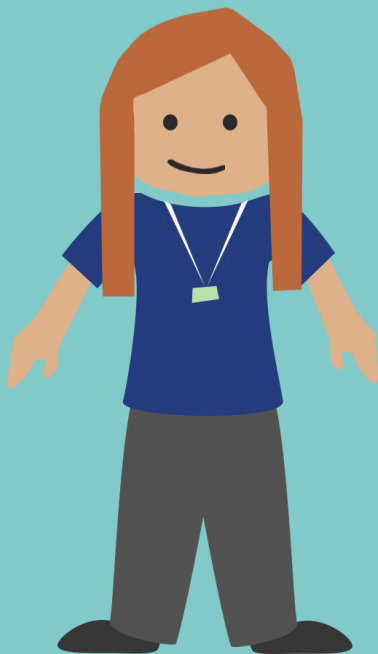


They might be called a

SENDCO
SENCO
INCO
INCLUSION MANAGER



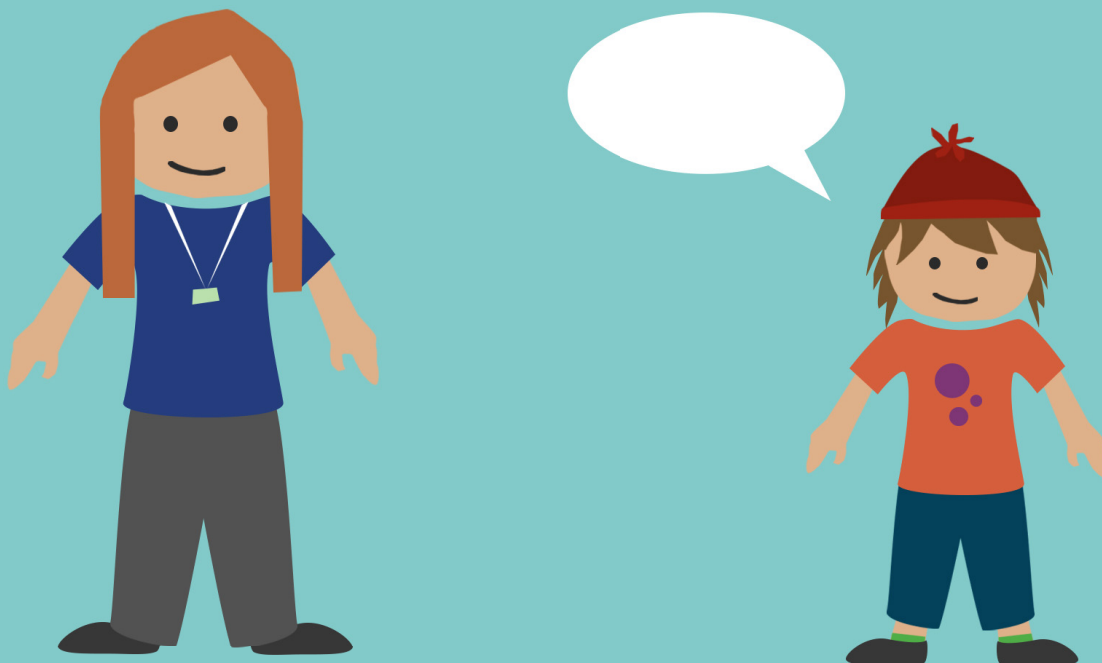
In my school we have somebody who helps my teachers think of new ways to support me, and checks with them that I am making good progress.



I often talk with my teachers about how I think I am doing in my learning. My parents or carers get involved in this conversation too.



We work through four steps – Assess, Plan, Do, and Review.



We talk about my outcomes, which are things I have been trying to achieve. Then we talk about how far I have got, and what has helped me.



Together we plan what my next steps are, and plan the support needed to achieve these.



My outcomes are aspirational, which means they might be challenging. This is why I break them down into manageable steps.

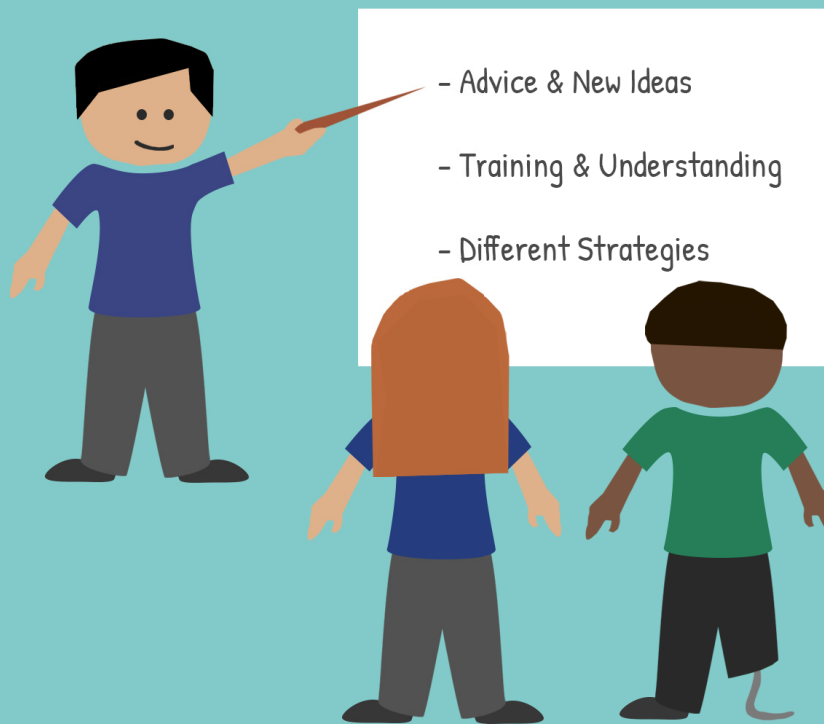


The four steps of Assess, Plan, Do, and Review are all part of the Graduated Approach. The Graduated Approach document has loads of information on how my teachers can help me.

Local Offer

www.local-offer.org

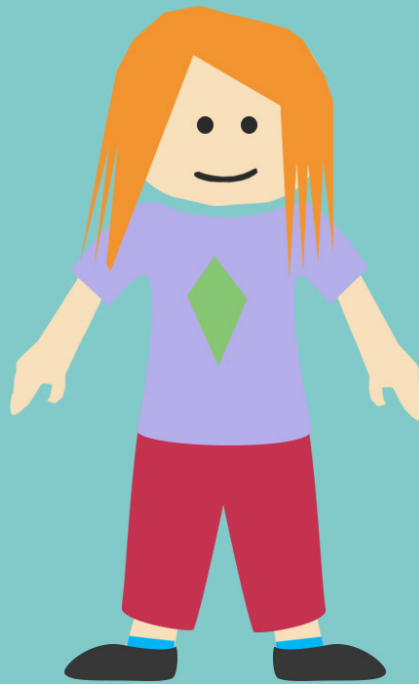
The Graduated Approach document can be found on the West Sussex Local Offer.



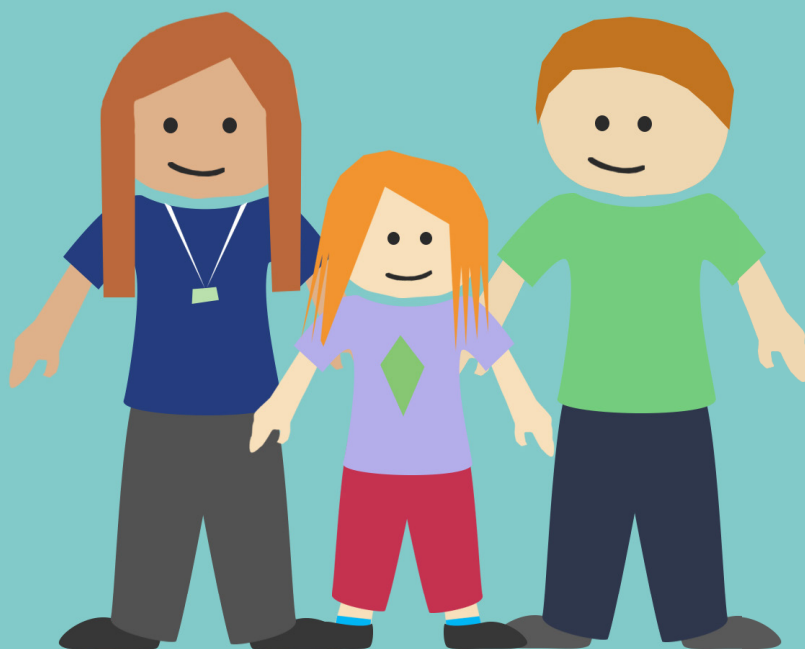
Sometimes professionals come into the school and give the adults advice and training.



We might have a meeting with all the people who support me. We use this time to think creatively and come up with new ideas.



Some children or young people need a lot more support and resources so that they can progress towards their outcomes.



Education
Health and
Care
Needs
Assessment

Their parents and their school or college can work together to apply for an Education, Health, and Care Needs Assessment (EHCNA).



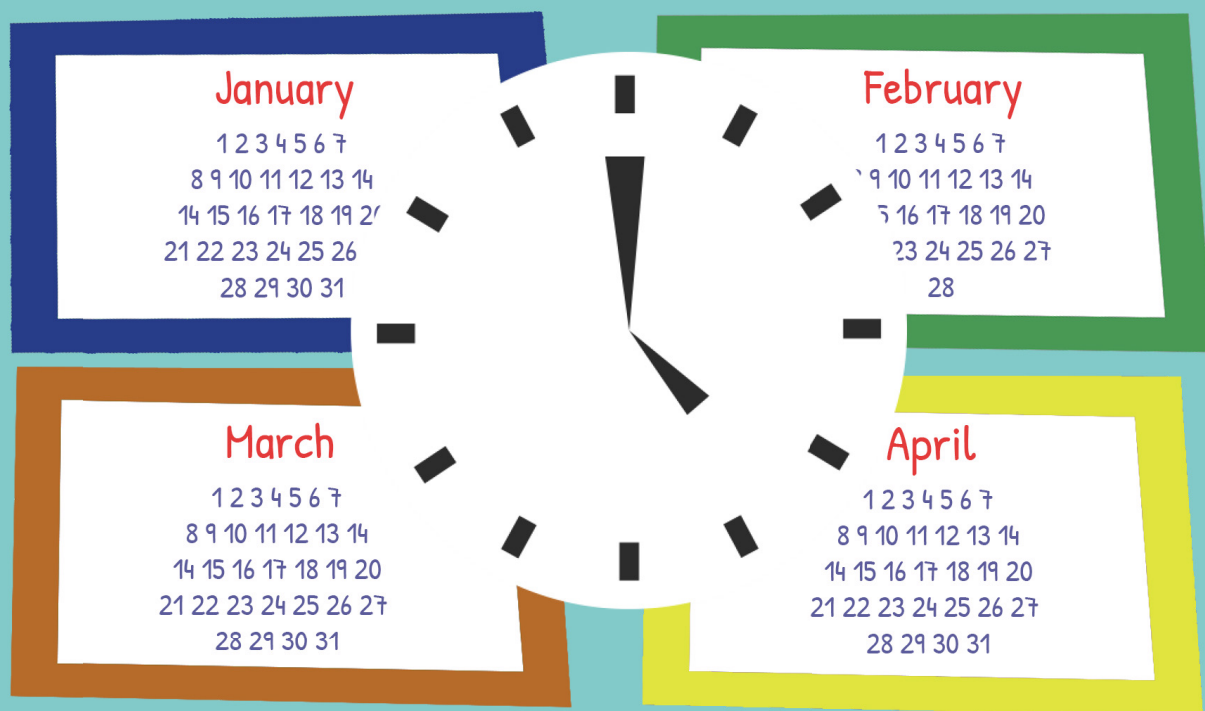
If they are over 16, they can apply for an EHCNA themselves.



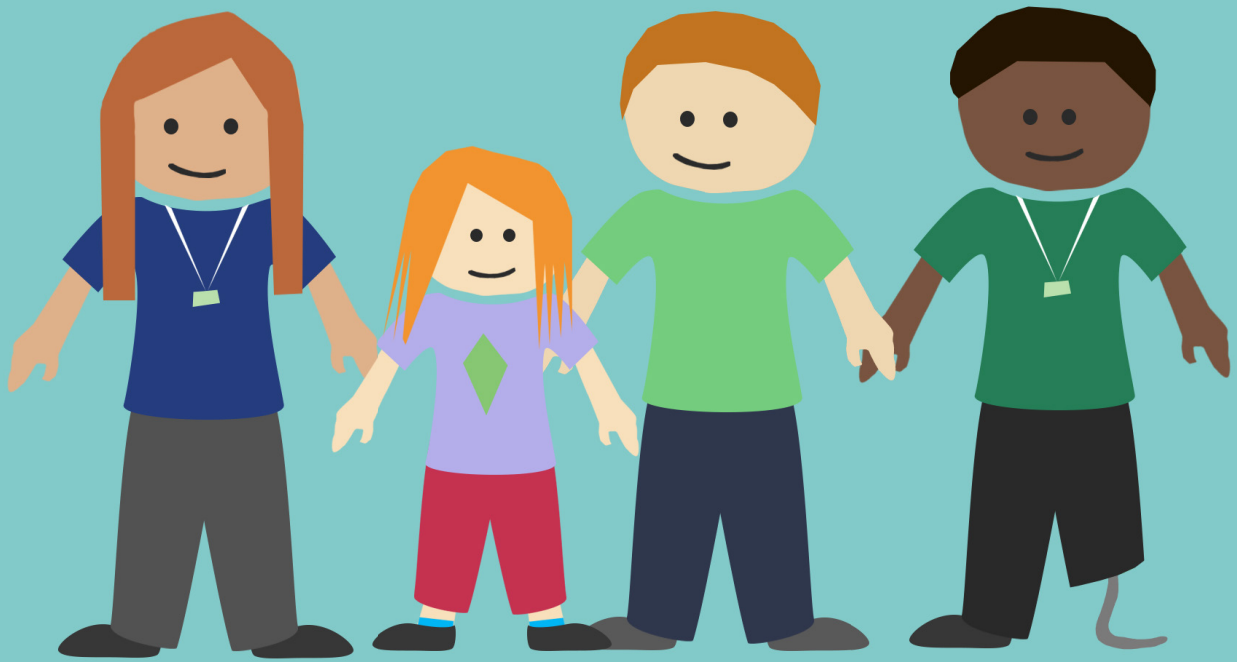
Schools and colleges already have some resources to support children and young people with SEND. An EHCNA will work out if additional support, or a special education place is needed for a child or young person to progress. If so, an Education, Health and Care Plan (EHCP) will be written.

Education Health and Care Plan

An EHCP is a legal document which describes your long-term outcomes. It also explains the support you need to achieve these outcomes, wherever you do your learning.



It can take up to 20 weeks to do the assessment and write the EHCP.



The process involves getting a range of information from different professionals, parent carers, and the child or young person.



If you would like to find out more about the types of SEND support available, visit the West Sussex Local Offer.



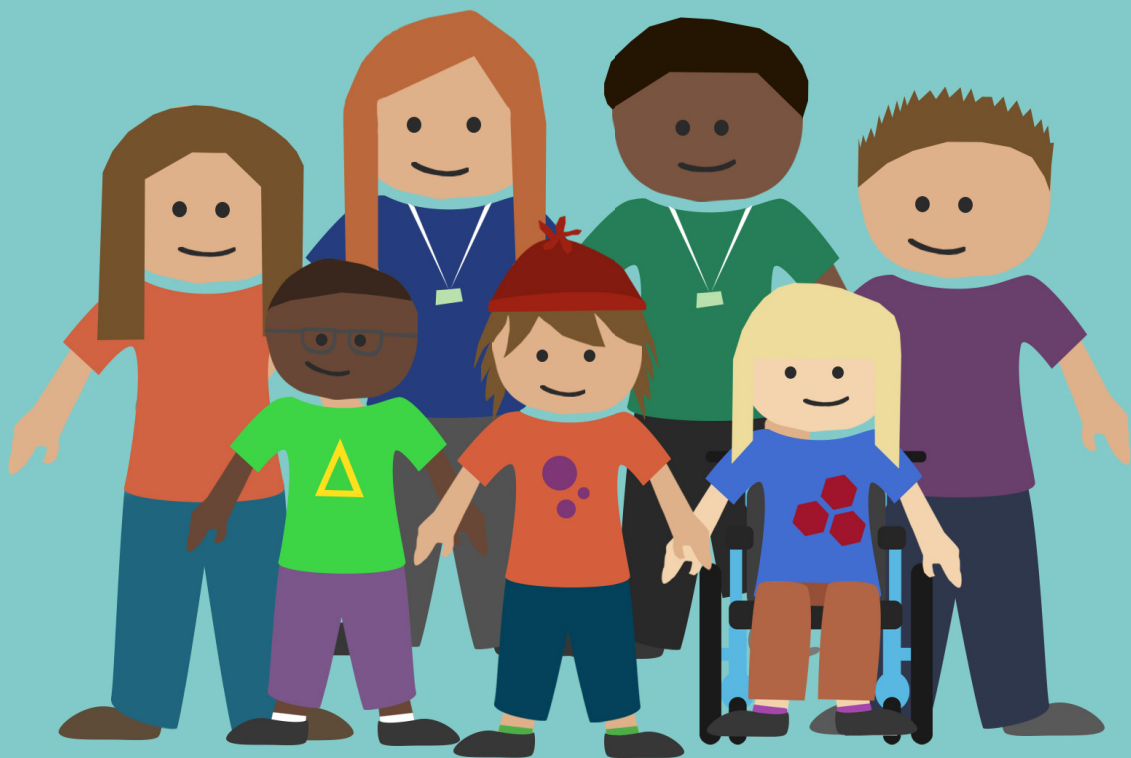
My family and I think the West Sussex Local Offer is great, as it has information on activities and services that are available in my local area.

Local Offer

www.local-offer.org

With many thanks to all the children, young people, schools, parent carers, and professionals who have helped us to develop this document.

This information is also available as an animation, which can be found on the West Sussex Local Offer, on the "Overview to the Graduated Approach" page.



Produced by WSCC in collaboration with frediles.co.uk